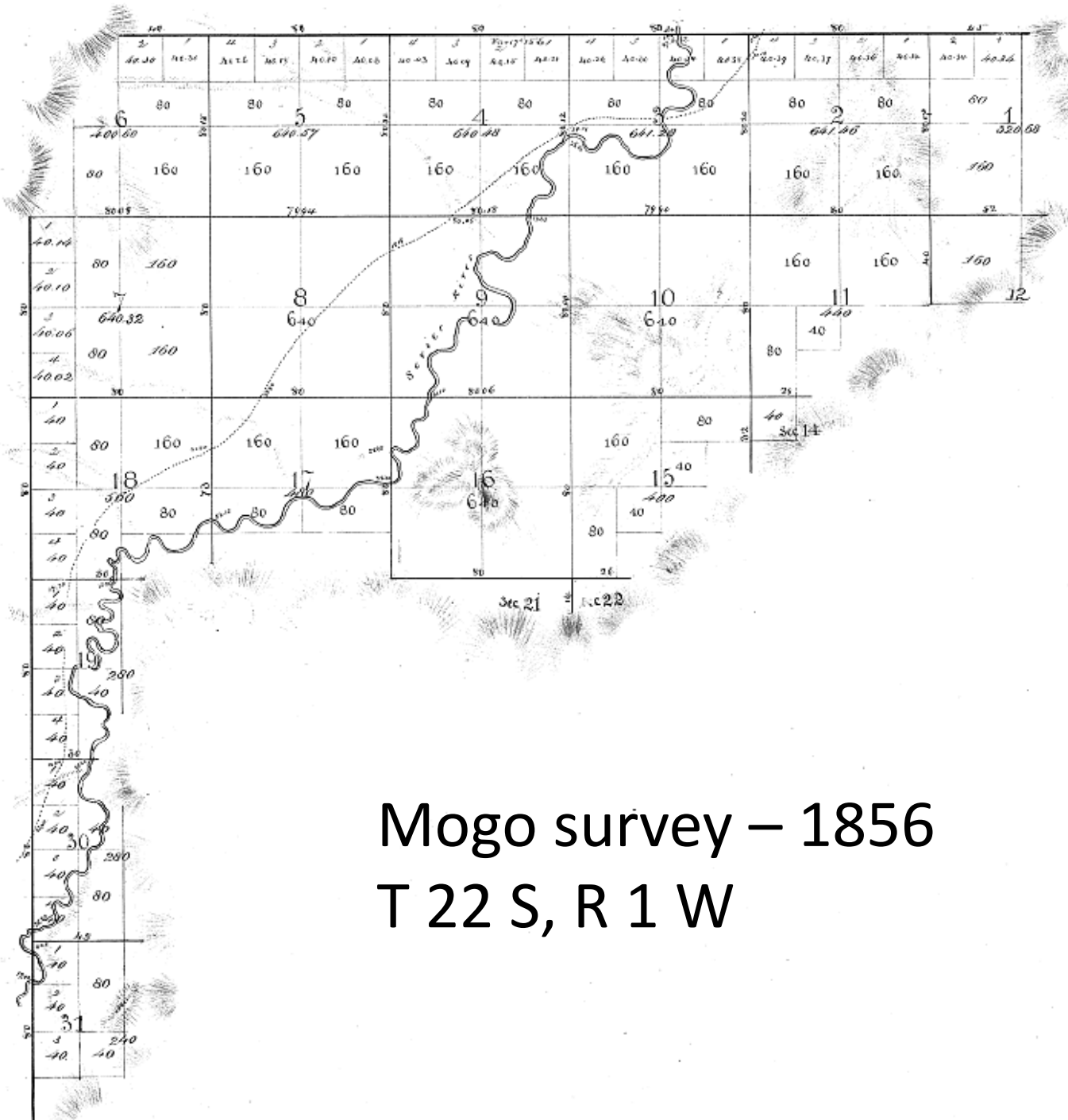


T. 22. S., R. 1 & 2 W., Group 1086, Aurora, Utah

Note: This survey was done in cooperation with Sevier County, represented by Registered Land Surveyor, Ryan Savage.

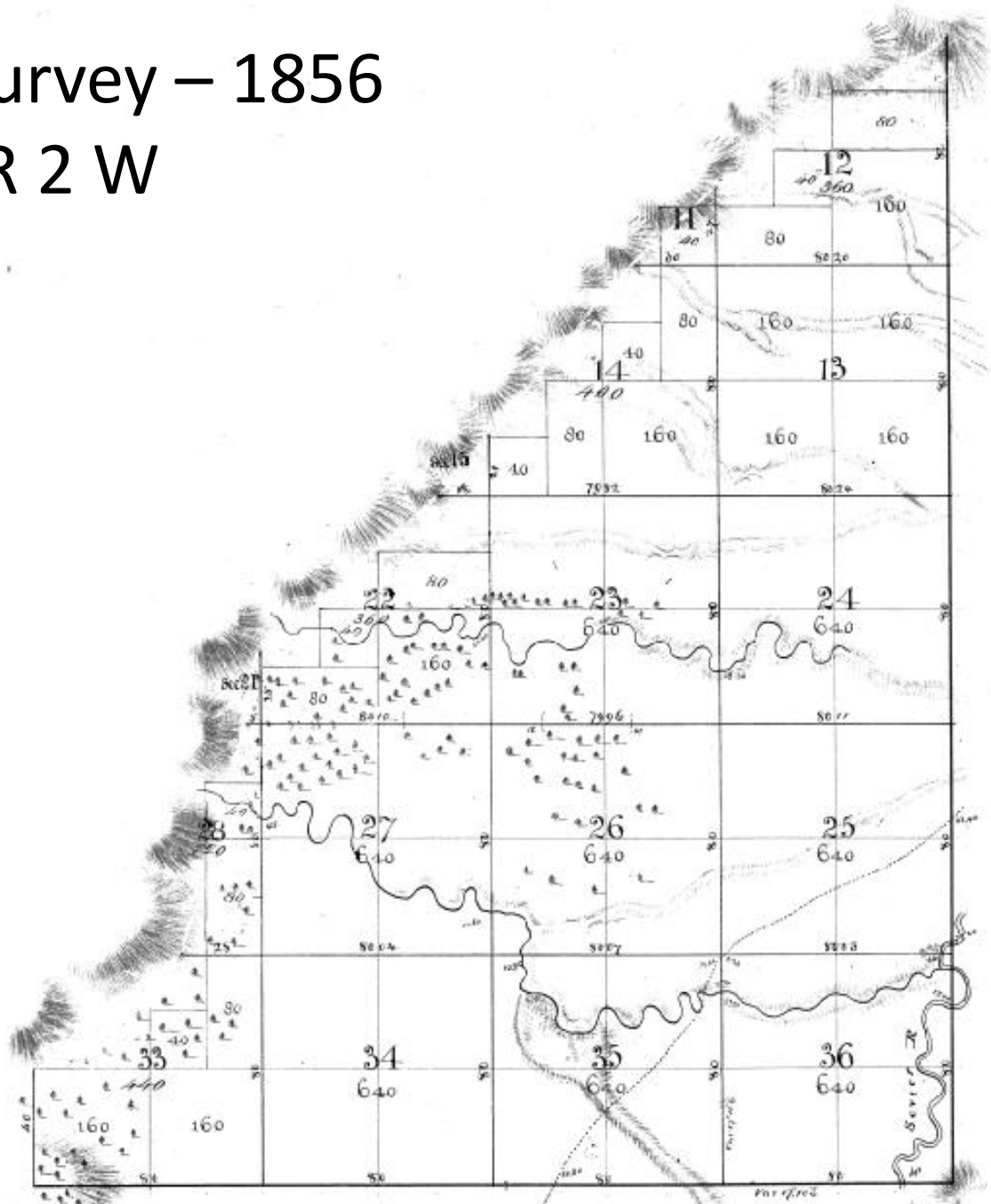


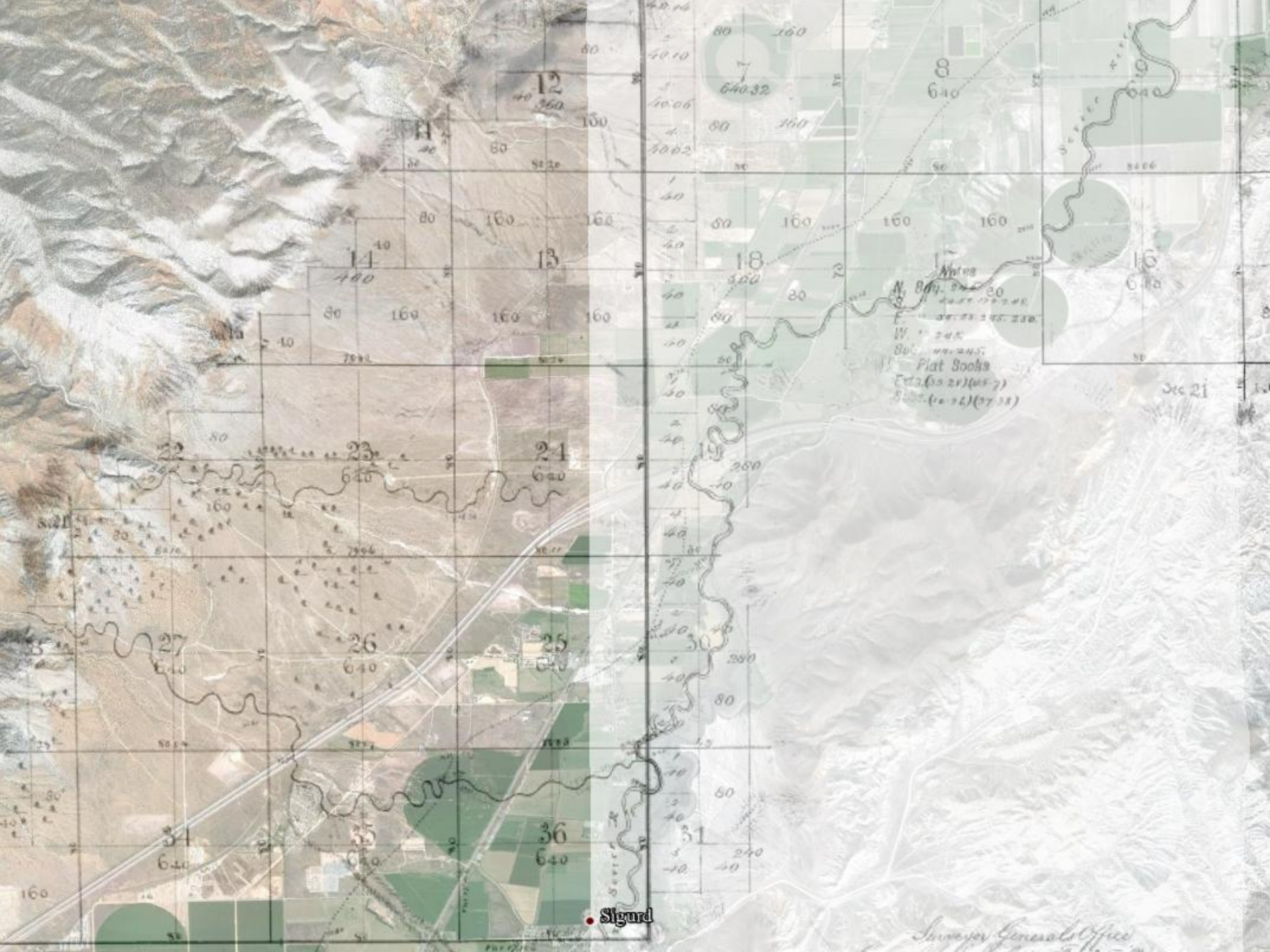


Mogo survey – 1856
T 22 S, R 1 W

Mogo survey – 1856

T 22 S, R 2 W





12
640

14
640

13
640

18
640

16
640

23
640

24
640

26
640

25
640

34
640

36
640

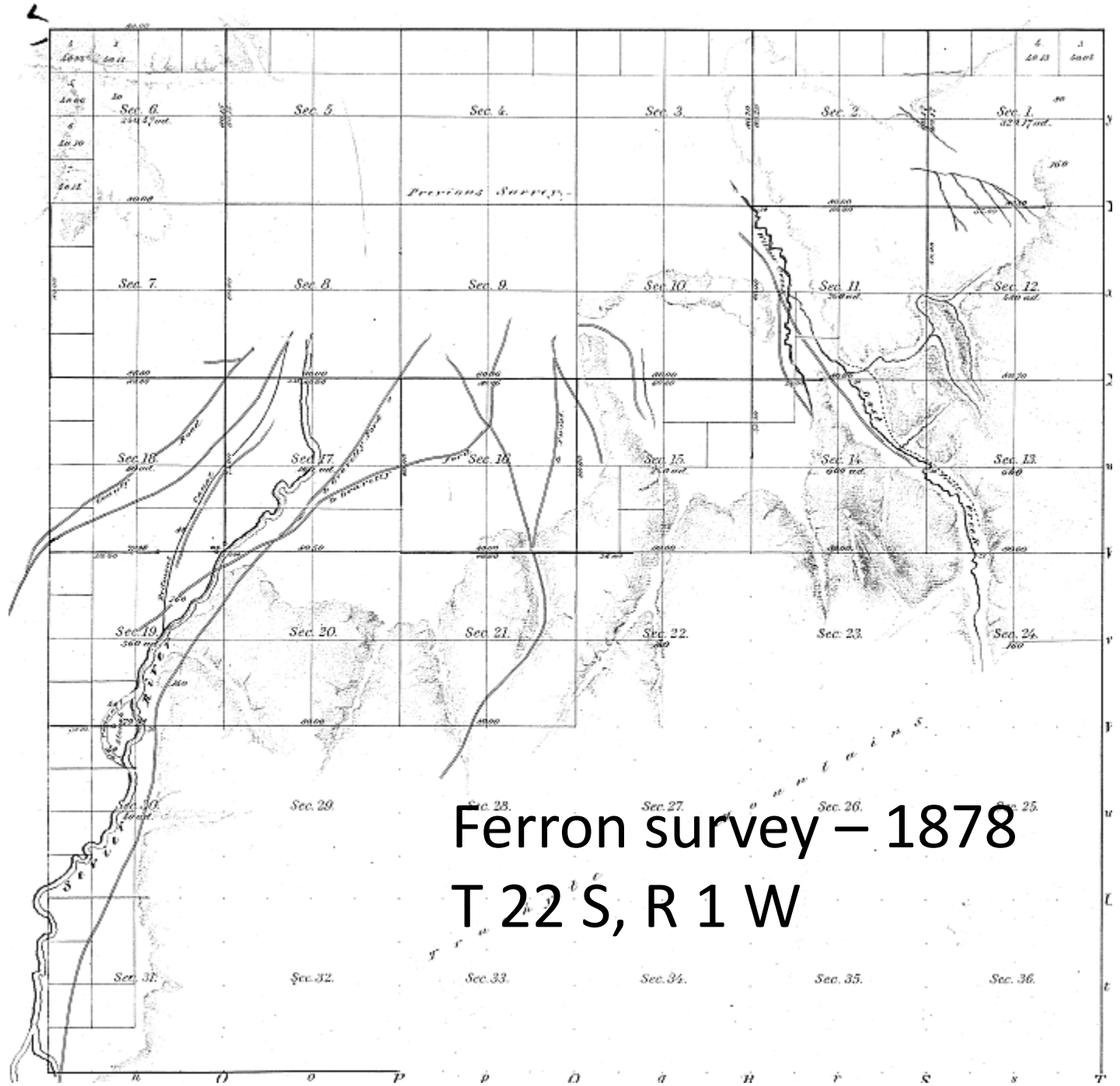
31
640

Notes
N. 80° E. 200
E. 200
W. 200
S. 200
Flat Books
Etc. (21) (27)
S. (10-16) (27-31)

Sec 21

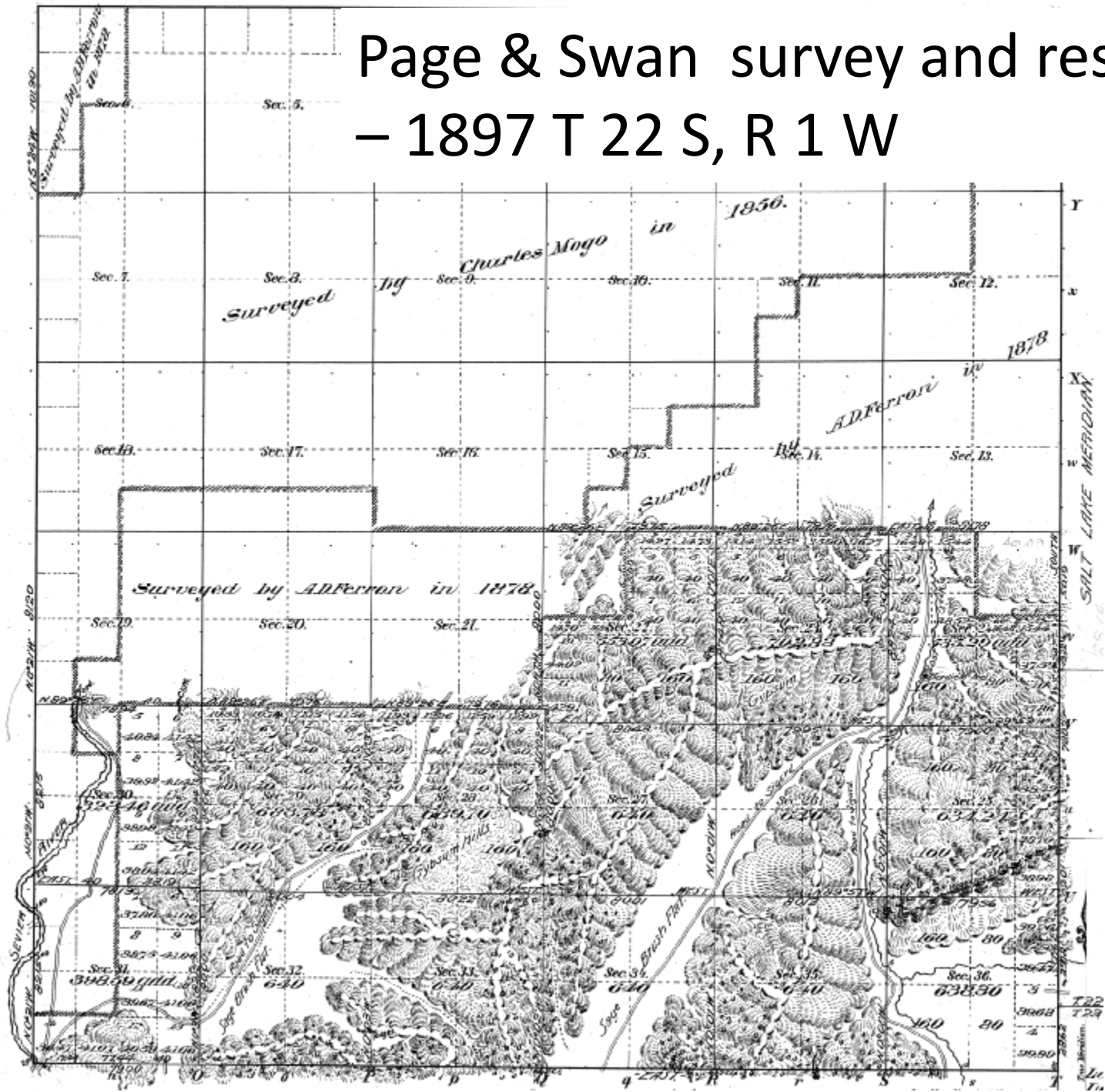
• Sigurd

Surveyor General's Office



Ferron survey – 1878
T 22 S, R 1 W

Page & Swan survey and resurvey – 1897 T 22 S, R 1 W



T. 21 S.
R. 2 W. R. 1 W.

Sec. 36

S. 85° 39' W 80.12
39.54 N. 89° 54' W

Aurora

Sec. 2

Sec. 1

Sec. 12

Sec. 11

Sec. 10

S. 87° 48' W 39.35 N. 89° 45' W 39.98 N. 89° 28' W 79.04

N. 89° 46' W 39.38 N. 89° 46' W 38.49 N. 89° 48' W 40.01 S. 89° 21' W 77.54

Sec. 15

Sec. 14

Sec. 13

N. 89° 21' W 80.32

N. 89° 10' W 77.72

Sec. 22

Sec. 23

Sec. 24



A history of earlier surveys is contained in the field notes.

This plat represents a dependent resurvey of the east mile of the south boundary of T. 21 S., R. 2 W., a portion of the east boundary and a portion of the subdivisional lines of T. 22 S., R. 2 W., Salt Lake Meridian, Utah, designed to restore the corners in their true original locations according to the best available evidence.

Lotting and areas are as shown upon plats approved February 25, 1857 and March 27, 1897.

This resurvey was executed by Craig P. Sylvester, Supervisory Cadastral Surveyor, July 17 to August 4, 1967 under Special Instructions dated April 12, 1967 for Group No. 493, Utah.

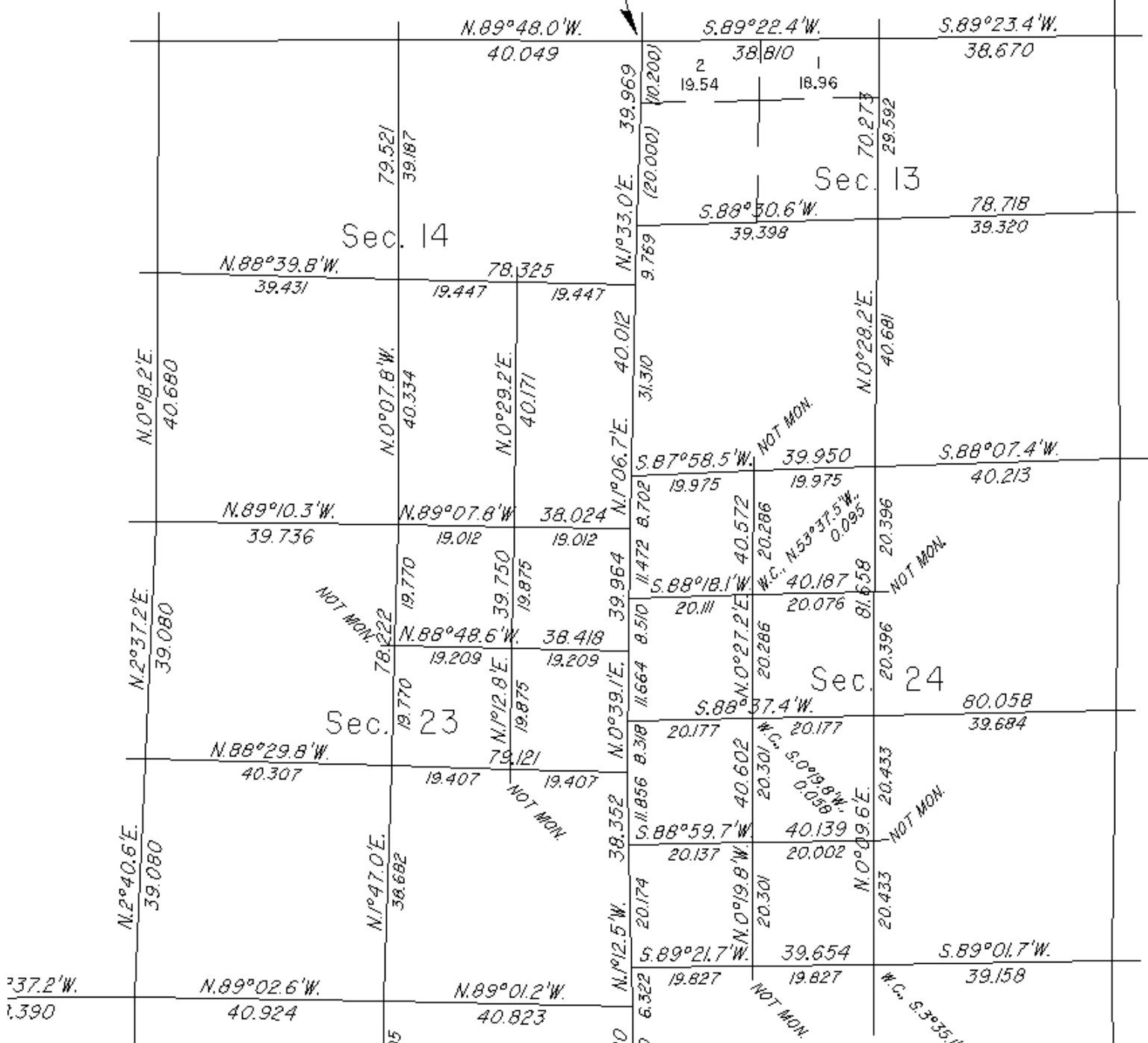
Survey

N. 89° 04' W 81.86

Latitude 38° 52' 04" N
Longitude 111° 58' 45" W

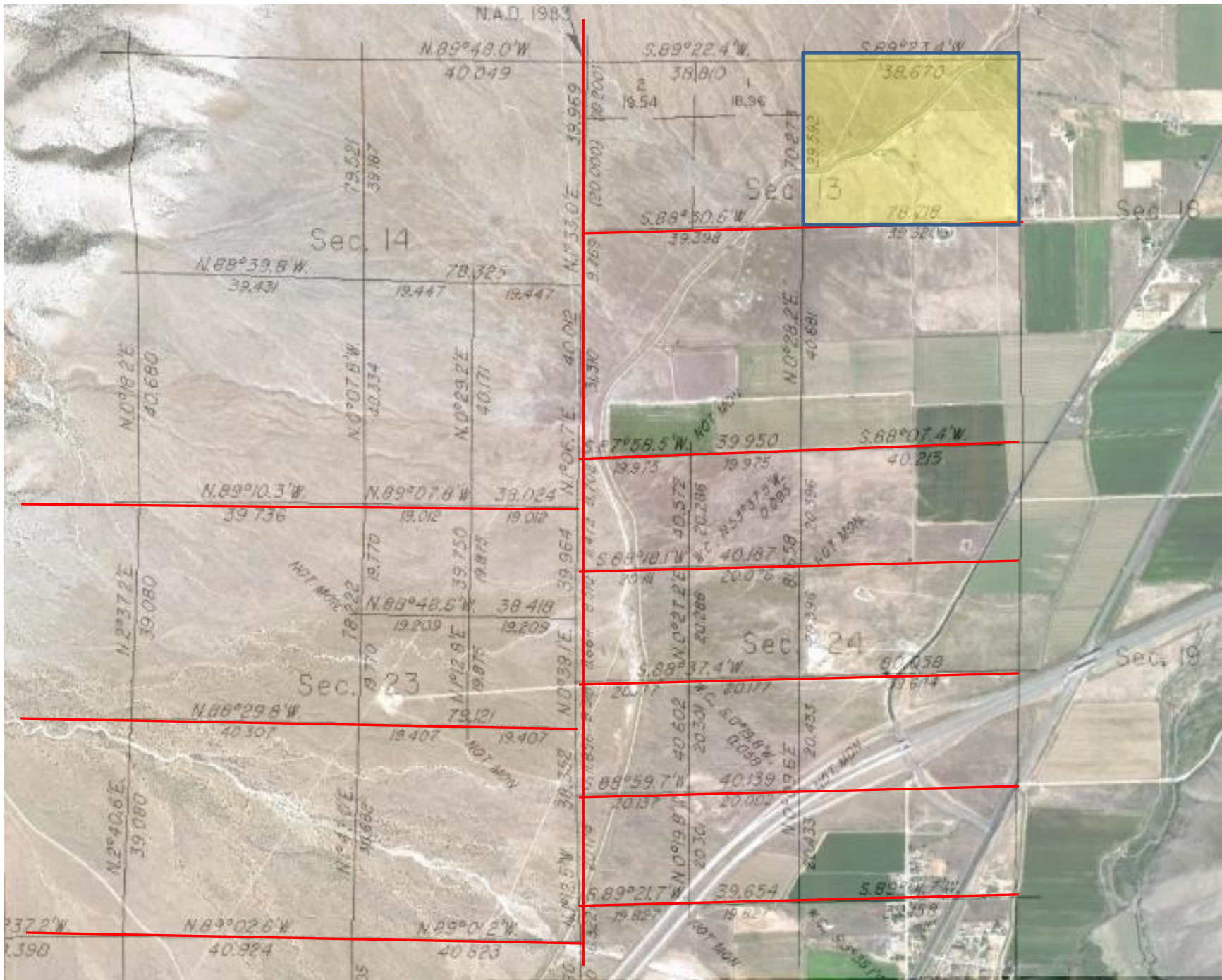
© 2012 Google

N.A.D. 1983



Sec. 18

Sec. 19



N.A.D. 1983

N.89°48.0'W.
40.049

S.89°22.4'W.
38.810

S.89°21.4'W.
38.670

Sec. 14

Sec. 18

N.88°39.8'W.
39.431

78.325
18.447 18.447

S.88°30.6'W.
39.398

78.718
39.581

N.0°18.2'E
40.680

N.0°07.8'W.
40.334

N.0°29.2'E
40.171

N.0°28.2'E
40.681

N.89°10.3'W.
39.736

N.89°07.8'W.
19.012 19.012

S.87°58.5'W.
39.950

S.88°07.4'W.
40.215

N.2°37.2'E
39.080

N.01°29.8'E
19.770

N.88°48.6'W.
19.209 19.209

N.0°29.2'E
39.750 19.875

N.0°21.2'E
40.572

S.84°48.1'W.
40.187

S.88°07.4'W.
40.215

Sec. 23

Sec. 24

Sec. 19

N.88°29.8'W.
40.307

N.0°39.1'E
19.407 19.407

S.88°07.4'W.
40.215

60.058
17.614

N.2°40.6'E
39.080

N.0°41.1'E
40.882

N.0°39.1'E
39.352

N.0°19.9'W.
40.602

S.88°59.7'W.
40.139

S.88°07.4'W.
40.215

S.37.2'W.
39.398

N.89°02.6'W.
40.994

N.89°01.2'W.
40.823

S.89°21.7'W.
39.654

S.89°01.7'W.
40.215

Manual of Surveying Instructions 2009

Principles of Resurveys

5-6. *Cragin v. Powell*, 128 U.S. 691 (1888) - Upon the issuance of a patent for land by the Federal Government, it is just as if the monuments, survey plat, field notes, laws, regulations, and rules governing how to survey the land described in the patent, are attached to the face of the patent. The survey rules are spelled out in the manuals, circulars, instructions, and regulations issued by the GLO, and its successor, the BLM.

In other words, it can be assumed that patents were issued upon the surveys made under the direction of the U. S. Surveyor General and a reference in a patent to the official plat and survey makes them a fully incorporated part of the patent.

Manual of Surveying Instructions 2009

Principles of Resurveys

5-5. The function of county, or other local surveyors, begins when the surveyors undertake the identification of lands that have passed from the Government into private ownership, based upon the description derived from the **original** survey. Their work should consist largely of running and marking the subdivision-of-section lines and corners. However, by law, **weight** shall be given to locally marked boundaries insofar as they are based on **good faith** reliance on evidence of the original survey and protect **bona fide** rights as to location of the boundaries of alienated lands.

Note: Due to numerous discrepancies between the existing Public Land Survey System records of the original survey and resurveys from 1856 to 1988, it is considered that portions of Tps. 22 S., Rs. 1 & 2 W., are either fictitious, fraudulent, or grossly erroneous beyond any tolerable limit. Local occupational lines, as determined by fences, roads, and other improvements, have been located in good faith by local surveyors and landowners for many years. Therefore, to protect the “bona fide” rights of the landowners by accepting these various lines of occupation as the best available evidence, a double set of corners is created in portions of this township.